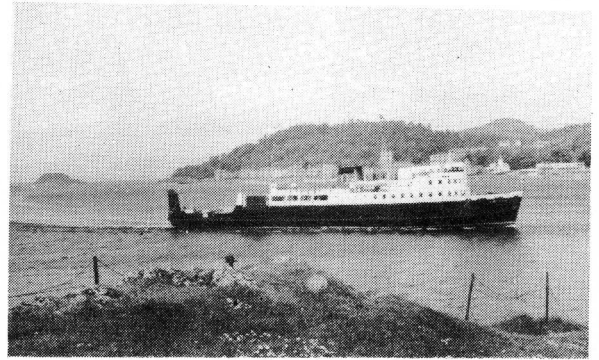




CLYDE RIVER STEAMER CLUB

Special Excursion from Gourock, Wemyss Bay and Largs with connections from Dunoon, Rothesay and Millport to



INVERARAY

outward via Garroch Head and **TARBERT**

returning via Kyles of Bute and **TIGHNABRUAICH**

by Motor Vessel

Glen Sannox

on

Saturday 26th April, 1975

ITINERARY

GOUROCK dep. 0900	via Garroch Head	ROTHESAY arr. 1900
	TARBERT arr. 1145	LARGS arr. 1940
WEMYSS BAY dep. 0940	INVERARAY arr. 1415	WEMYSS BAY arr. 2010
 dep. 1515	DUNOON arr. 2040
LARGS dep. 1010	TIGHNABRUAICH arr. 1750	GOUROCK arr. 2100
 dep. 1815	

CONNECTING SERVICES

BY RAIL:—

Outward —

- 0800 Glasgow (Central) to Gourock
- 0835 Glasgow (Central) to Largs
- 0840 Glasgow (Central) to Wemyss Bay

Return (trains will not await arrival of steamer) —

- 1955 Largs to Glasgow (Central), arr. 2107
- 2046 Wemyss Bay to Glasgow (Central), arr. 2140
- 2105 Gourock to Glasgow (Central), arr. 2158

BY STEAMER (no extra charge):—

Outward —

- 0800 Dunoon to Gourock
- 0900 Rothesay to Wemyss Bay
- 0930 Cumbrae Slip to Largs

Return —

- 1945 Largs to Cumbrae Slip

LUNCHEON (£1.05) and HIGH TEA (£0.95) will be served at times detailed below. It is regretted that owing to the limited accommodation in the dining saloon (50) no half price meals can be served.

TICKETS MUST BE OBTAINED IN ADVANCE — EARLY BOOKING STRONGLY ADVISED

Bookings at C.R.S.C. meeting on 9 April or **BY POST ONLY** from — Mr IAN McCORIE, 72 Newton Street, Greenock, PA16 8ST.

FARE £3.50 ONLY

£4.00 if booked on day of trip.
O.A.P.'s (advance booking only) special fare of £2.50
Schoolchildren — £2.00.

CLYDE RIVER STEAMER CLUB — Excursion to Inveraray by M.V. GLEN SANNOX on Saturday 26 April, 1975.

To: — Mr I. McCORIE, 72 Newton Street, Greenock, PA16 8ST.

I wish to make the following bookings for the above excursion and enclose a remittance for £ . in favour of the "Clyde River Steamer Club."

I ENCLOSE A STAMPED, ADDRESSED ENVELOPE FOR REPLY.

From: Name

Address

Post Code

BLOCK CAPITALS PLEASE